



SOCIAL[®]
Works well with others.

SitOnIt • Seating[™]

The lightweight Social chair makes pull-up collaboration easy, boldly delivering a smart design and an attractive price tag.



ERGONOMIC COMFORT

Social offers excellent support and a perfect fit for extended comfort. Its ergonomic back follows the natural curve of the human body, offering firm, body-fitting support. The double-layered mesh creates ideal back support. An upholstered waterfall seat further promotes good circulation and posture, conforming to each body naturally.



The Social side chair is the perfect complement to any office interior.

SUSTAINABILITY

Every product SitOnIt Seating makes is GREENGUARD and GREENGUARD Children and Schools certified, providing the confidence you need and the environmental stewardship you've come to expect. Made from readily available recyclable materials.



DURABILITY

Like all SitOnIt Seating products, the Social collection is built to last. Every component exceeds ANSI/BIFMA standards. The standard Lifetime Warranty further protects your investment, ensuring complete satisfaction into the future.



Below all seats: Momentum / Foray / Iron



Electric Blue



Fire



Desert



Fog



Nickel



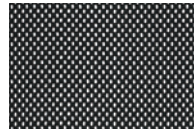
Onyx

Features

- 6 mesh back colors
- Upholstered or plastic seat
- Black or silver frame goes with any upholstery
- Meets CAL 133 specifications in black plastic or with approved textiles
- Stacks 10-12 on the optional cart, 5 on the floor
- Lifetime Warranty up to 250 lbs. on all structural components
- All options and thousands of fabrics ship in 2, 5 or 10 days

Options

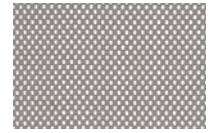
6 Mesh Colors



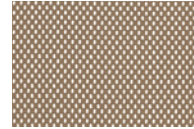
Onyx
(MC5)



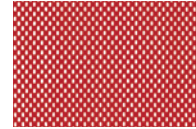
Nickel
(MC6)



Fog
(MC7)



Desert
(MC9)



Fire
(MC10)



Electric Blue
(MC13)



Black Frame

The Social frame is available in black for a handsome and distinguished look.



Silver Frame

Choose a silver frame for a sleek, contemporary look that complements a modern design.



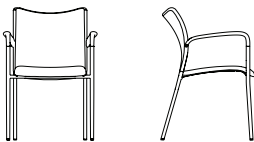
Stacking

Stack 5 on the floor or 10-12 on the optional cart.

Models

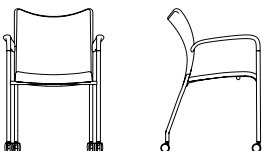
Social Side Chair

9611 Side chair, black frame
9612 Side chair, silver frame



Social Side with Casters

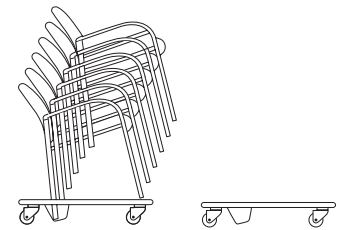
9641 Side chair with casters, black frame
9642 Side chair with casters, silver frame



OVERALL WIDTH ARMLESS	18
OVERALL WIDTH WITH ARMS	22.75
OVERALL DEPTH	23
OVERALL HEIGHT	32
SEAT WIDTH	18
SEAT DEPTH	17
SEAT HEIGHT	17.75
BACK WIDTH	18
BACK HEIGHT	16.5
WEIGHT ARMLESS	11.5 lbs.
WEIGHT WITH ARMS	13.5 lbs.

Dimensions are in inches.

Social Stacking Cart 96-Cart



CART WITH 10 CHAIRS

STACKING CART

OVERALL WIDTH	25.5	25.5
OVERALL LENGTH	30.5	36
OVERALL HEIGHT	26.8	58
WEIGHT	220 lbs.	32 lbs.

Dimensions are in inches.

Form No. C150 03/14 3K 6569 ©2014 Exemplus Corporation. Printed in USA.
SitOnIt and Social are trademarks or registered trademarks of Exemplus Corporation.
All other trademarks are the property of their respective owners.



SitOnIt • Seating™

for more information
please visit us at
www.sitonit.net

tel [888] 274-8664
fax [714] 995-4855
sales@sitonit.net

6415 Katella Avenue
Cypress, CA 90630