



# NEW PORT Tool Rail

## Overview:

NEW PORT is a flexible, versatile tool rail system that creates clean, personal “up and off the desk” organization which can be configured in a number of different ways, as follows:

- The NEW PORT tool rail is available in varying lengths to accommodate different desk sizes.
- The NEW PORT tool rail can include no privacy screen or a 15-3/8” high privacy screen made of acoustic fabric, melamine, writeable glass or opaque tempered glass.
- The NEW PORT tool rail can be mounted to the desk at multiple heights, and in multiple ways.
- The NEW PORT tool rail can be used in single-sided or double-sided desk environments.
- The NEW PORT tool rail can accommodate a wide range of NEW WAVE desk accessories.



NEW PORT shown with no privacy screen and accessories



NEW PORT shown with privacy screen and NEW WAVE accessories

NEW WAVE

## HOW TO ORDER NEW PORT

1. First, configure your New Port tool rail system by referring to the Tool Rail & Screen Specification Table below [Table I].
  - a. Select a tool rail length and finish color [Column A].
  - b. If specifying a tool rail without a screen, select a cover color and identify the appropriate model number based on tool rail length [Column B].
  - c. If specifying a tool rail with a screen, choose your desired screen material - Melamine (and corresponding finish color), Acoustic Fabric (and corresponding finish color), Opaque Tempered Glass or Writeable Glass; and identify the appropriate model number based on tool rail length [Column C].
2. Next, select a mounting setup from the Mounting Specification Table below [Table II].
  - a. Select a mounting height [above the desk] for the tool rail [Column A].
  - b. Next, select the appropriate mounting hardware for the desk and identify the appropriate model number based on mounting level [Column B].
3. Finally, select your New Wave accessories which hang off of the New Port tool rail.

Table I –

**TOOL RAIL & SCREEN SPECIFICATION TABLE**



Tool Rail (Including End Caps)	Tool Rail Without Screen (Including Cover)	Tool Rail With Screen			
		Melamine Screen	Acoustic Fabric Screen	Opaque Tempered Glass Screen	Writeable Glass Screen [for use with dry erase markers]
Tool Rail available in White, Sand, Silver or Black	Tool Rail Cover available in White, Blue or Red	For Melamine Screen finish options, please see page 4	For Acoustic Fabric Screen finish options, please see page 4		
Tool Rail Length	Model	Model	Model	Model	Model
21"	NP-53EP	NP-53CM	NP-53CTA	NP-53CVO	NP-53CVT
31 1/2"	NP-80EP	NP-80CM	NP-80CTA	NP-80CVO	NP-80CVT
39 3/8"	NP-100EP	NP-100CM	NP-100CTA	NP-100CVO	NP-100CVT
47 1/4"	NP-120EP	NP-120CM	NP-120CTA	NP-120CVO	NP-120CVT
55 1/8"	NP-140EP	NP-140CM	NP-140CTA	NP-140CVO	NP-140CVT
63"	NP-160EP	NP-160CM	NP-160CTA	NP-160CVO	NP-160CVT

\*Custom tool rail lengths available, contact Customer Service for details.



**Table II –  
MOUNTING SPECIFICATION TABLE**



A. Mounting Height	B. Mounting Type & Hardware		
	Single Sided Desk *	Double Sided Desk	Thru Desk **
Mounting Height	Model	Model	Model
Desktop Level	NP-00P	NP-00M	NP-00F
3 15/16" Above Desk	NP-10P	NP-10M	NP-10F
7 7/8" Above Desk	NP-20P	NP-20M	NP-20F

\*The minimum desk surface depth for mounting on a single sided desk edge is 1 5/8".

\*\*The minimum hole size for mounting through the desk is 13/32".

**Table III –  
OVERALL DIMENSIONS**

Please note, the overall dimensions shown here include the tool rail, screen (if applicable) and mounting hardware.

Overall Dimensions – <u>No</u> Screen (Model NP-EP)												
Toolbar Length	Desktop Level Mount				3 15/16" Above Desk Mount				7 7/8" Above Desk Mount			
	H	W	D	Shipping Weight	H	W	D	Shipping Weight	H	W	D	Shipping Weight
21"	2 3/8"	21"	1 11/16"	5 lbs.	6 5/16"	21"	1 11/16"	7 lbs.	10 1/4"	21"	1 11/16"	8 lbs.
31 1/2"	2 3/8"	31 1/2"	1 11/16"	7 lbs.	6 5/16"	31 1/2"	1 11/16"	9 lbs.	10 1/4"	31 1/2"	1 11/16"	10 lbs.
39 3/8"	2 3/8"	39 3/8"	1 11/16"	7 lbs.	6 5/16"	39 3/8"	1 11/16"	9 lbs.	10 1/4"	39 3/8"	1 11/16"	10 lbs.
47 1/4"	2 3/8"	47 1/4"	1 11/16"	8 lbs.	6 5/16"	47 1/4"	1 11/16"	10 lbs.	10 1/4"	47 1/4"	1 11/16"	11 lbs.
55 1/8"	2 3/8"	55 1/8"	1 11/16"	9 lbs.	6 5/16"	55 1/8"	1 11/16"	11 lbs.	10 1/4"	55 1/8"	1 11/16"	12 lbs.
63"	2 3/8"	63"	1 11/16"	10 lbs.	6 5/16"	63"	1 11/16"	12 lbs.	10 1/4"	63"	1 11/16"	13 lbs.

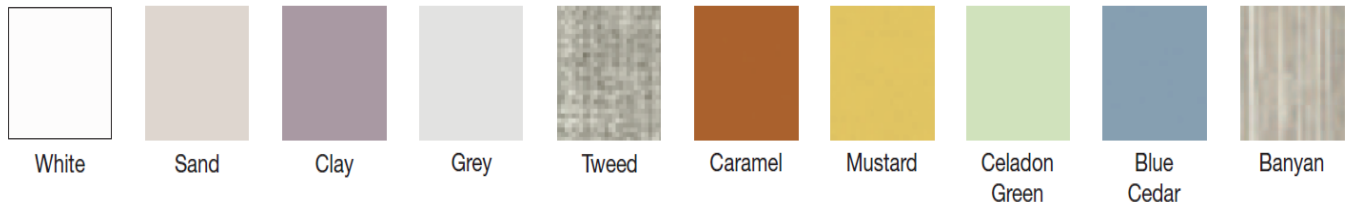
Overall Dimensions – <u>With</u> Screen (Models NP-CM, CTA, CVO, CVT)												
Toolbar Length	Desktop Level Mount				3 15/16" Above Desk Mount				7 7/8" Above Desk Mount			
	H	W	D	Shipping Weight	H	W	D	Shipping Weight	H	W	D	Shipping Weight
21"	17 3/4"	21"	1 11/16"	21 lbs.	21 11/16"	21"	1 11/16"	23 lbs.	25 5/8"	21"	1 11/16"	24 lbs.
31 1/2"	17 3/4"	31 1/2"	1 11/16"	23 lbs.	21 11/16"	31 1/2"	1 11/16"	25 lbs.	25 5/8"	31 1/2"	1 11/16"	26 lbs.
39 3/8"	17 3/4"	39 3/8"	1 11/16"	25 lbs.	21 11/16"	39 3/8"	1 11/16"	27 lbs.	25 5/8"	39 3/8"	1 11/16"	28 lbs.
47 1/4"	17 3/4"	47 1/4"	1 11/16"	28 lbs.	21 11/16"	47 1/4"	1 11/16"	30 lbs.	25 5/8"	47 1/4"	1 11/16"	31 lbs.
55 1/8"	17 3/4"	55 1/8"	1 11/16"	31 lbs.	21 11/16"	55 1/8"	1 11/16"	33 lbs.	25 5/8"	55 1/8"	1 11/16"	34 lbs.
63"	17 3/4"	63"	1 11/16"	35 lbs.	21 11/16"	63"	1 11/16"	37 lbs.	25 5/8"	63"	1 11/16"	38 lbs.

**NEW PORT FINISH COLORS**

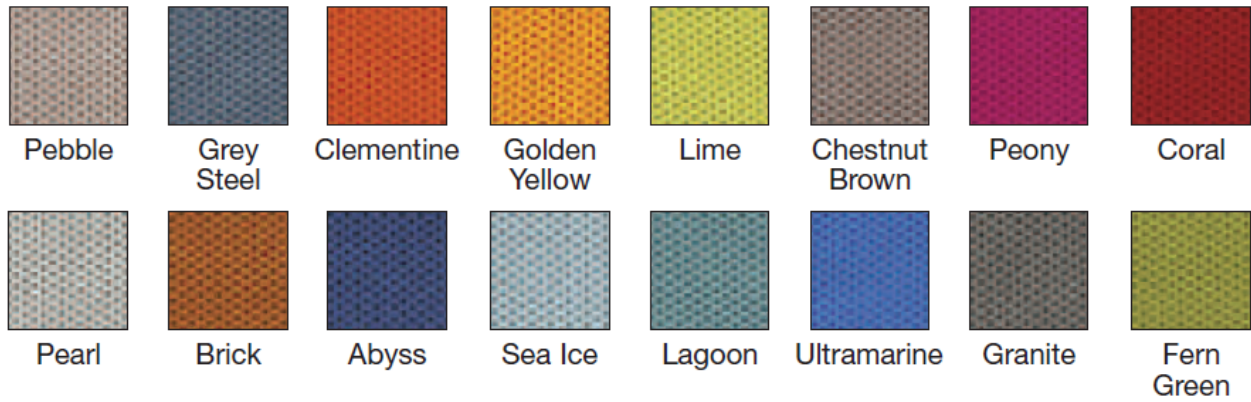
**Tool Rail Finish Colors**



**Melamine Screen Finish Colors**



**Acoustic Fabric Screen Finish Colors**



**NEW WAVE Product Overview** – The following NEW WAVE accessories can be used with NEW PORT:



**NW-10**



**NW-103**



**NW-21**



**NW-22**



**NW-23NP/SUM**



**NW-30**



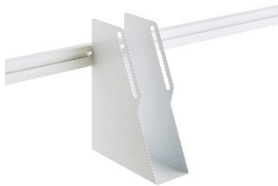
**NW-40**



**NW-52**



**NW-60**



**NW-70**



**NW-80**



**PNP-NP-08**



**MELO-NP-TM**



**MELO-NP-UM**